


TAKE THE LEAP

160 QVS

A line-art illustration of a person in business attire (jacket, tie, trousers, and shoes) jumping over the letter 'Q' in the address '160 QVS'. The person is positioned between the two '0's, with one leg tucked under the 'Q' and arms outstretched, suggesting a leap or a jump.

54,000 SQ FT OF OFFICE SPACE COMING SOON
160 QUEEN VICTORIA STREET, EC4



Building Overview

Welcome to 160 QVS, a landmark building in London's historical financial district refurbished to a high quality specification with attractive amenities and finishes for an HQ that's more than just another office. Benefitting from new end-of-trip facilities, a roof terrace with city views, Cat A refurbishment to the 2nd floor, and atriums for natural light, 160 QVS is an address any organisation would be proud to call home.



St Paul's

4 minute walk

One New Change

4 minute walk

Blackfriars

3 minute walk

Bank

5 minute walk

Mansion House

2 minute walk

Cannon Street

4 minute walk

Blackfriars Pier

4 minute walk

Bankside Ferry

5 minute walk

Tate Modern

6 minute walk

160 QVS

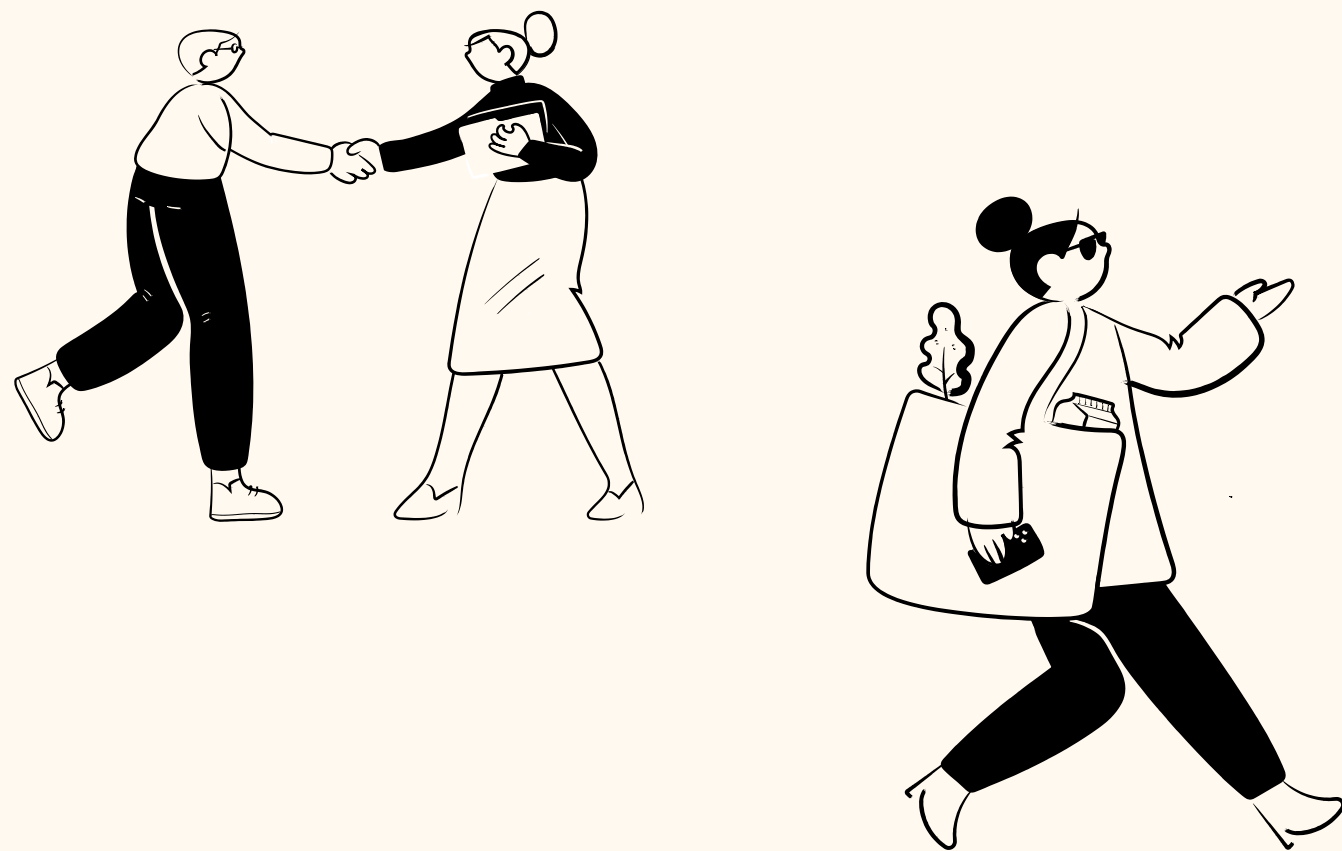




The Space

You've arrived

Offering multiple entrances on Queen Victoria Street and Playhouse Yard, which are both welcoming and impressive, the ground floor reception integrates biophilic design for equilibrium and wellbeing. Generous planters and living walls are filled with an array of greenery, while strategic glazing ensures natural light. Thoughtfully designed barriers ensure security that doesn't detract from the ambience.





Greenery and natural wood accents contrast with sleek monochrome finishes.

Schedule of availability

FLOOR	SQ FT	SQ M	
Communal roof terrace	2,900	270	Opening Q3 2026
Sixth	LET		
Fifth	LET		
Fourth	LET		
Third	LET		
Second West	22,469	2,087	Available now
First West	17,990	1,671	Available Cat A from Q3 2026
Ground West	13,862	1,288	Available Cat A from Q3 2026
Total offices	54,321	5,046	

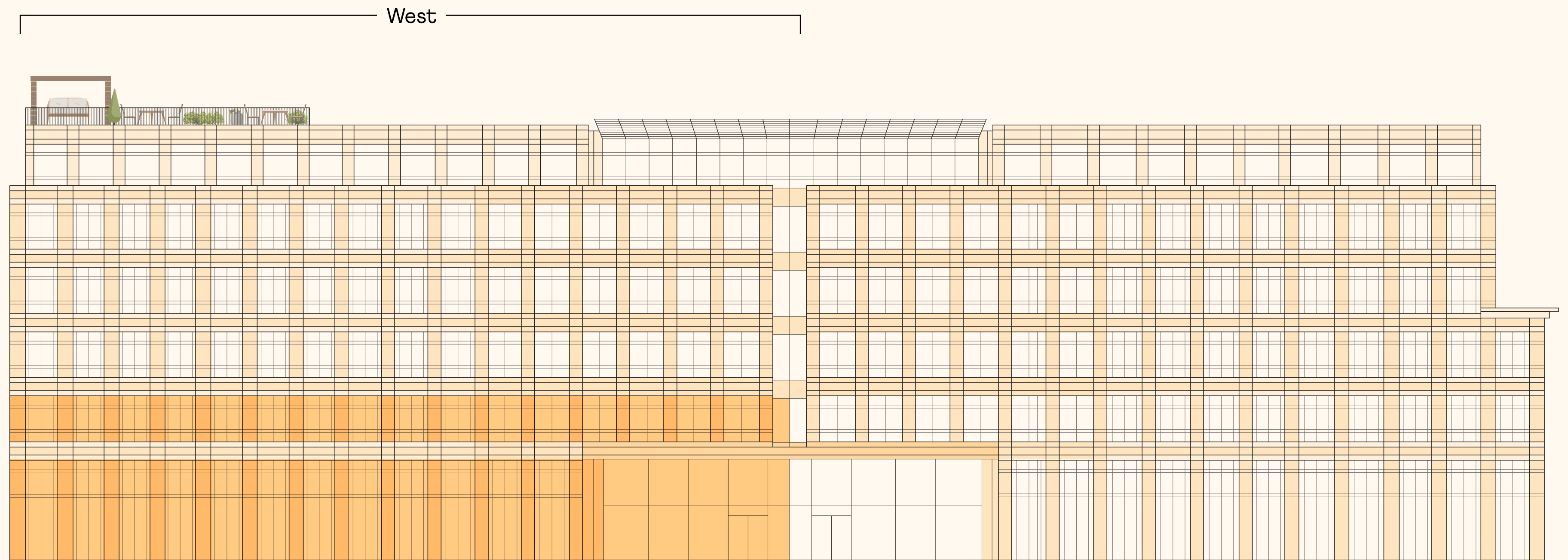
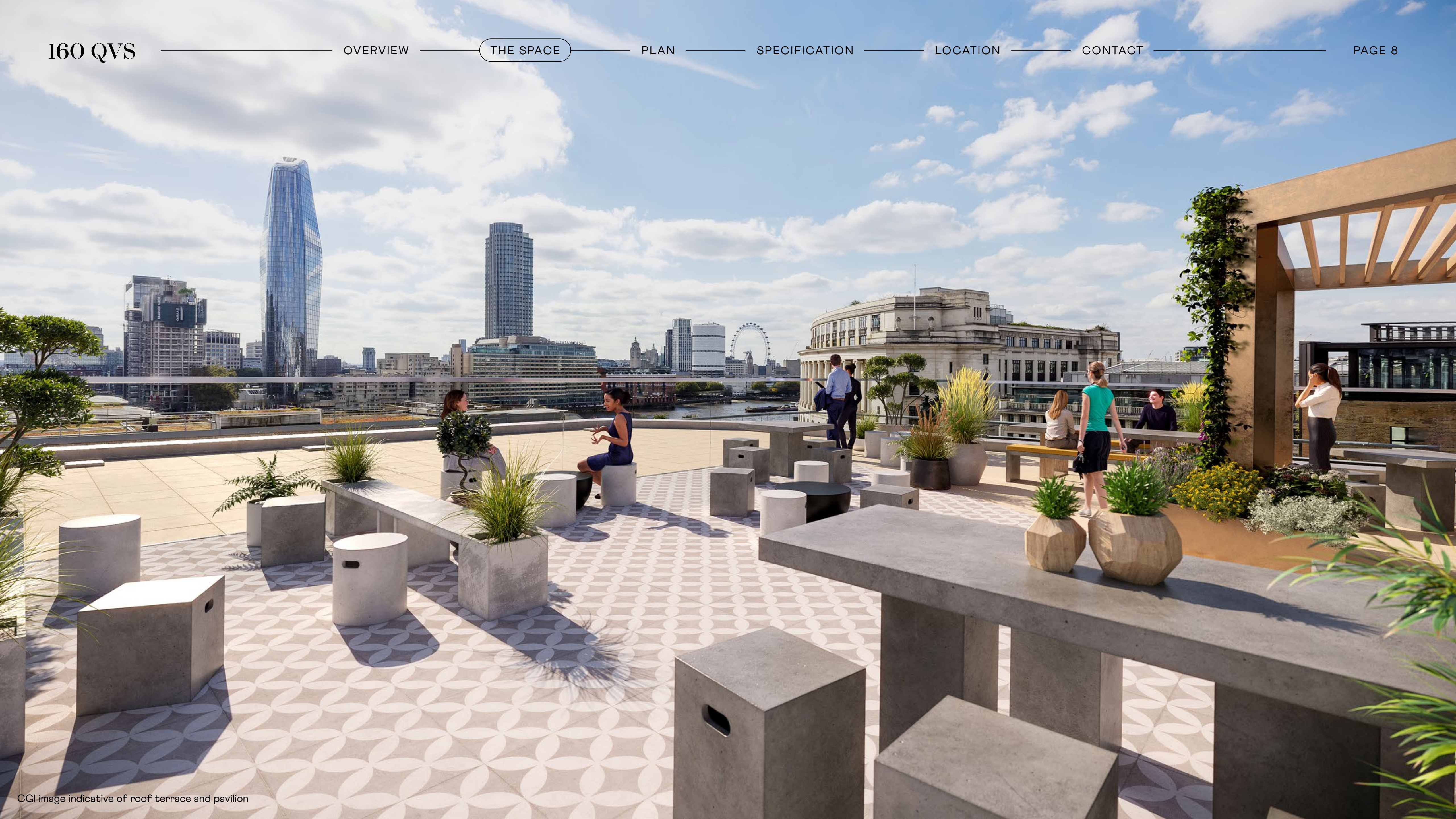
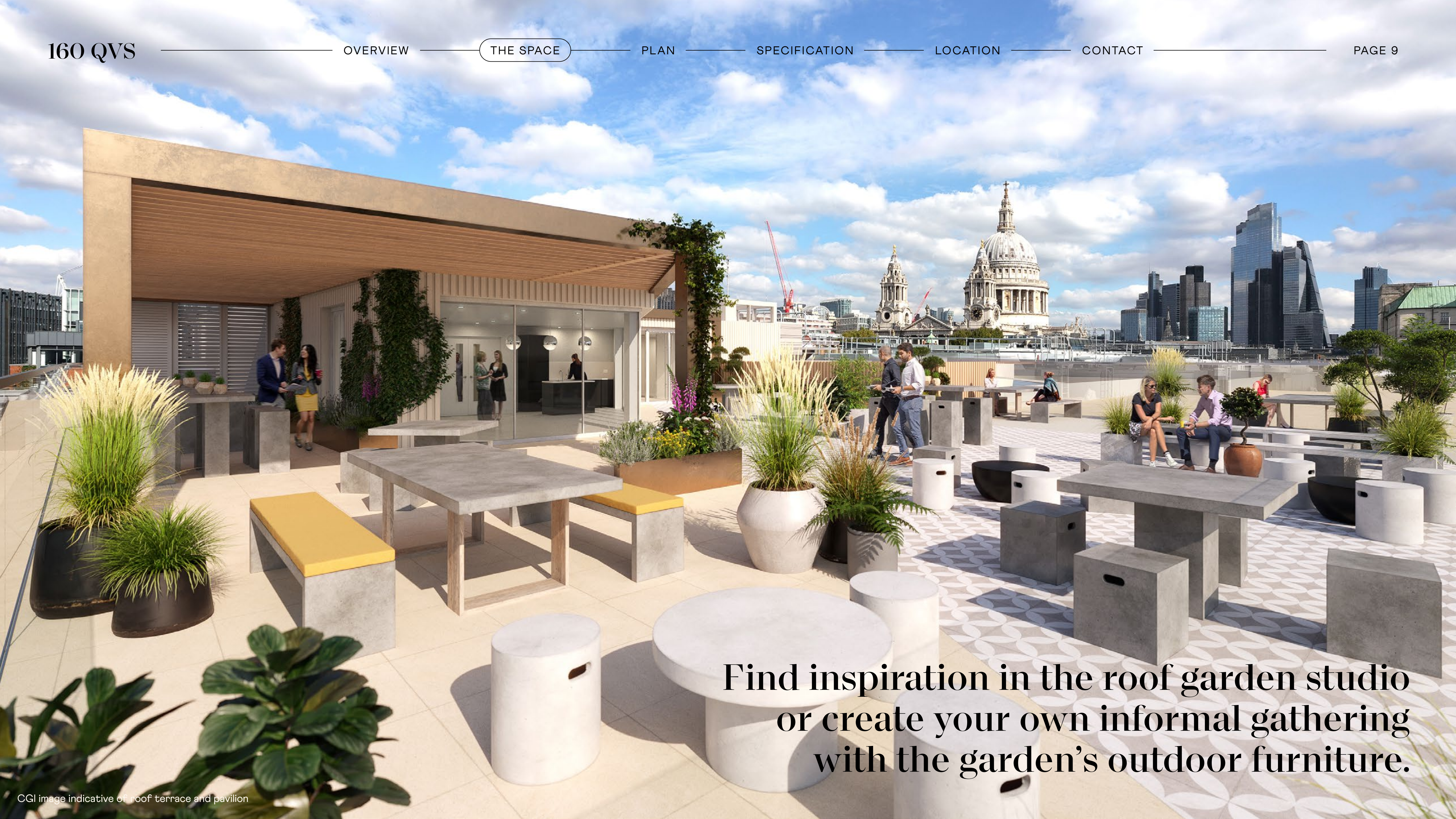


Illustration for indicative purposes only, not to scale.
Floor areas are subject to final measurement.

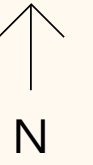


CGI image indicative of roof terrace and pavilion



Find inspiration in the roof garden studio or create your own informal gathering with the garden's outdoor furniture.

Roof terrace



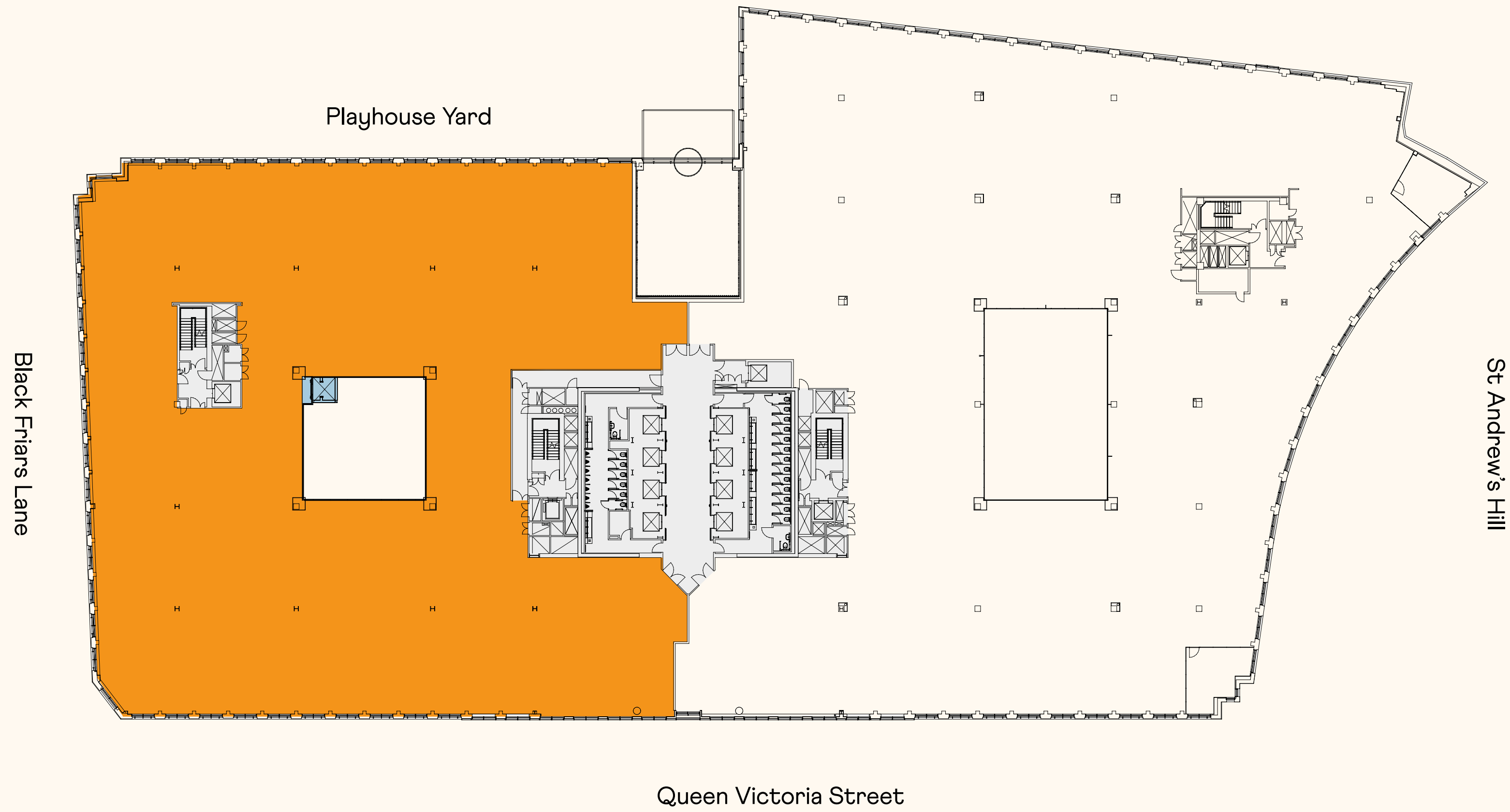
Key

- Pergola / terrace
- Communal, flexible garden studio
- Roof terrace lift
- Core

Terrace:	2,900 sq ft	270 sq m
Roof garden studio:	377 sq ft	35 sq m



Second West

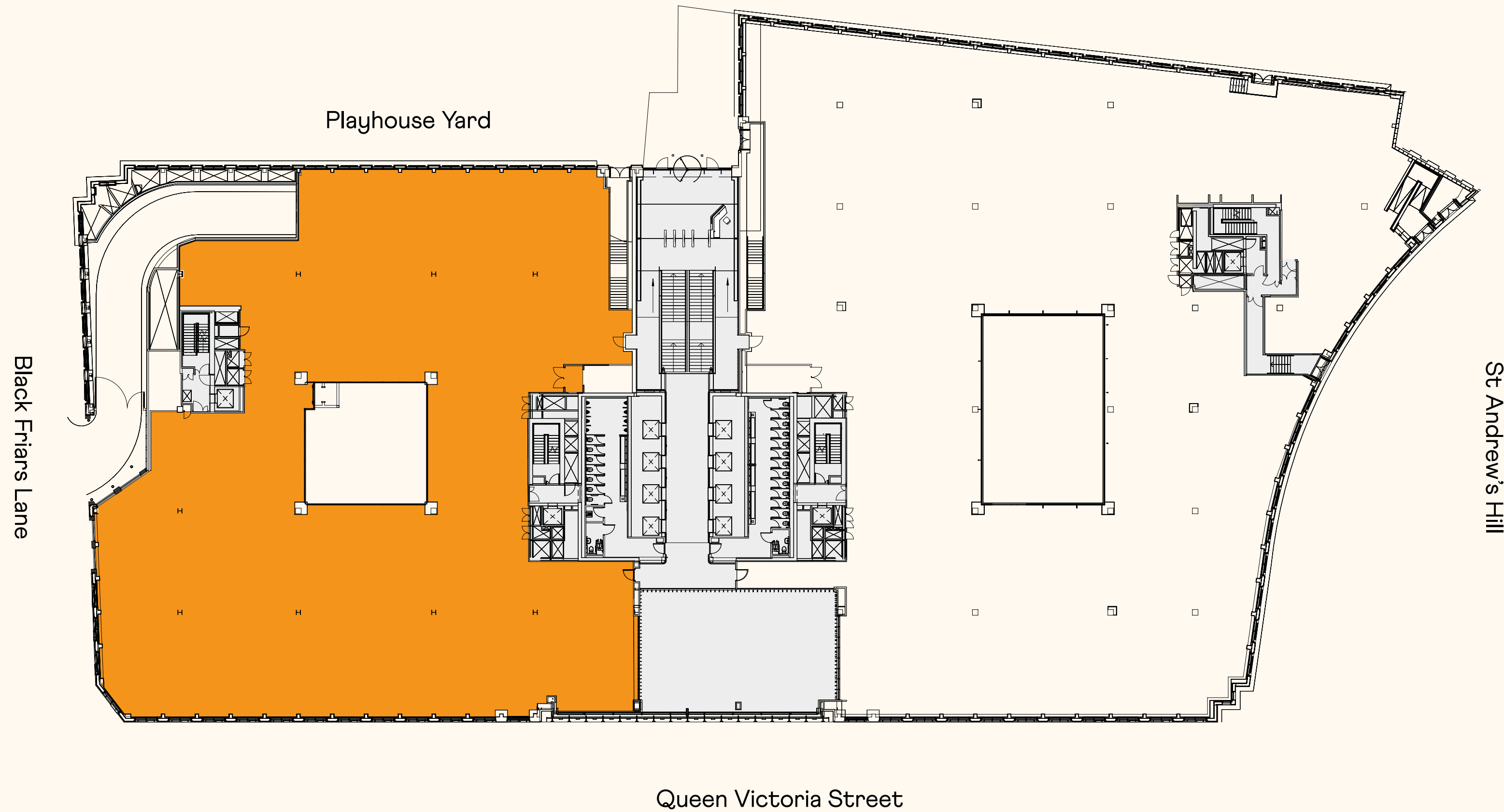


Key

■	Office
■	Roof terrace lift
■	Core

Office	22,469 sq ft	2,087 sq m
--------	--------------	------------

First West

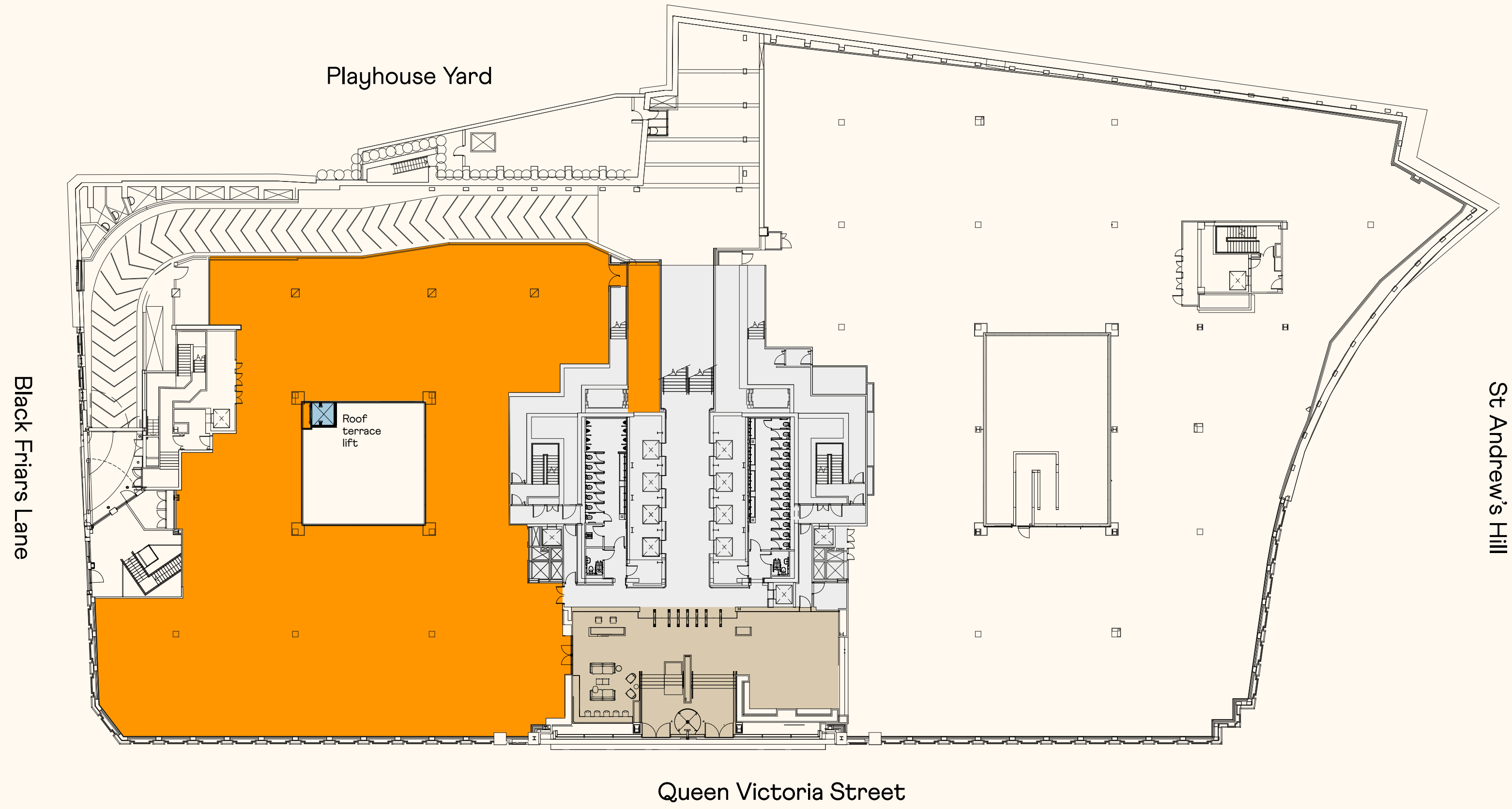
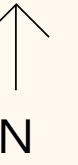


Key

Office
Roof terrace lift
Core

Office	17,990 sq ft	1,671 sq ft
--------	--------------	-------------

Ground West

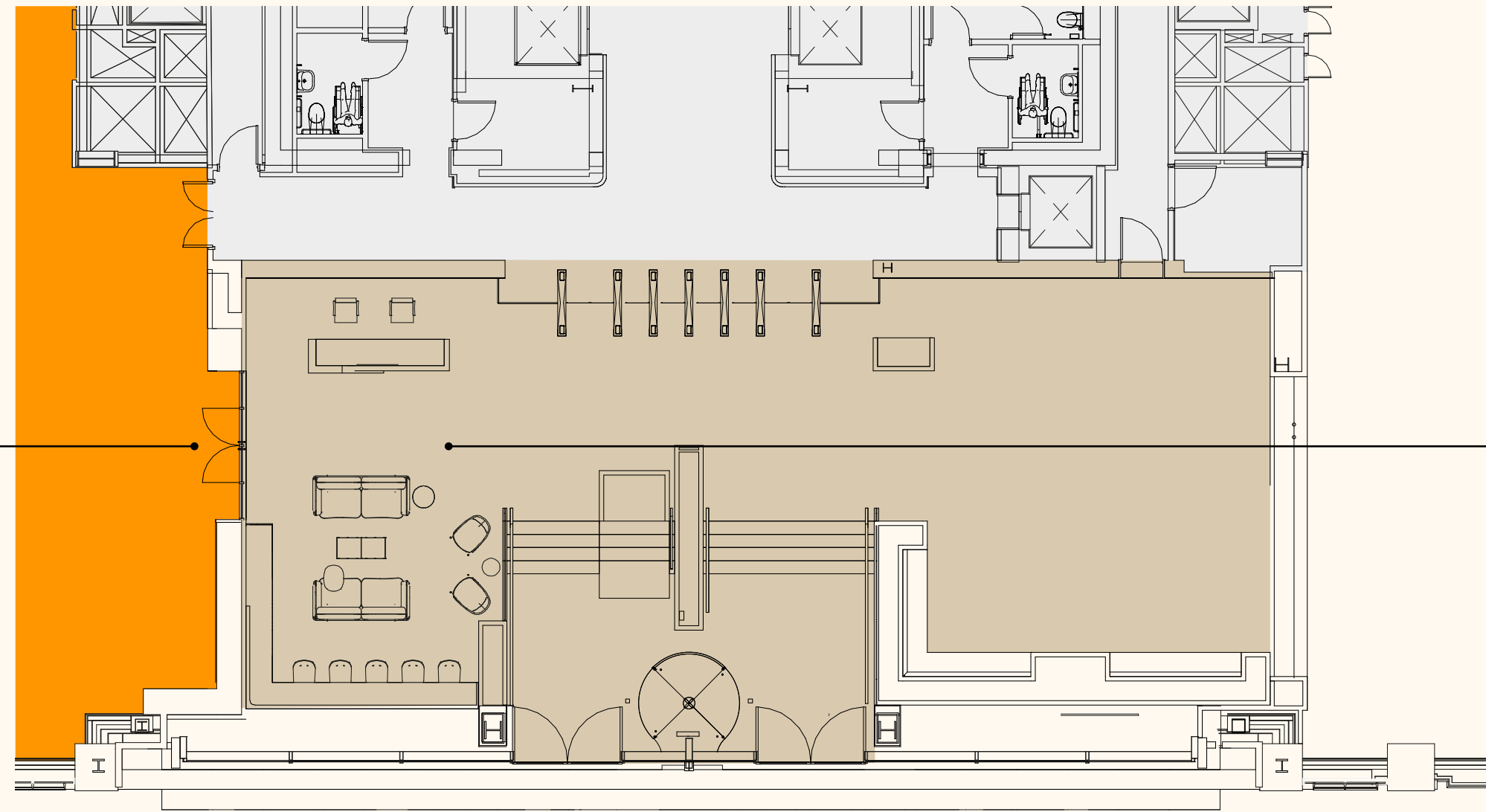
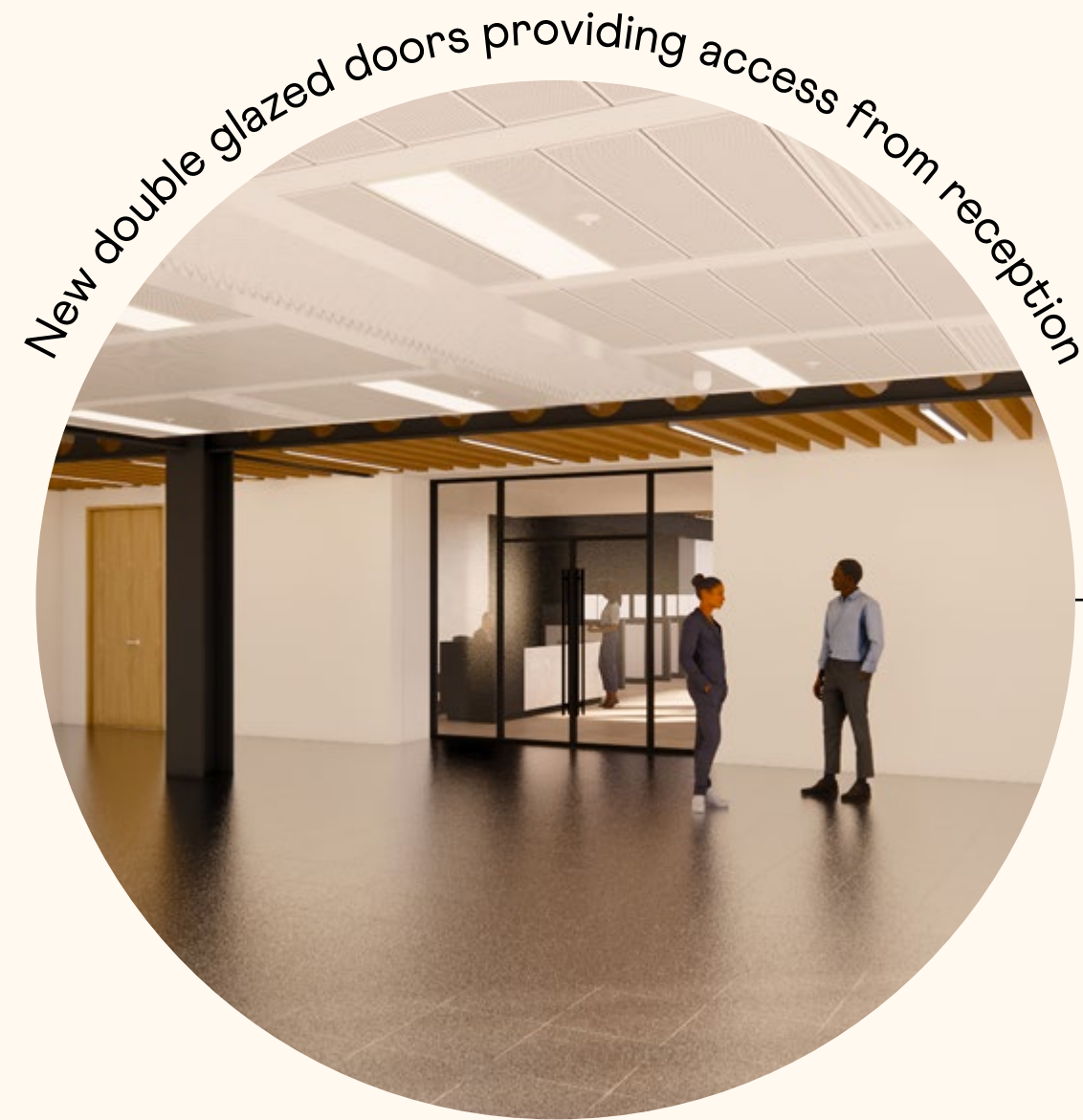
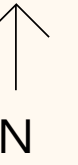


Key

- Office
- Reception
- Roof terrace lift
- Core

Office	13,862 sq ft	1,288 sq ft
--------	--------------	-------------

Reception



Queen Victoria Street

Key

- Office
- Reception
- Roof terrace lift
- Core

CGI images of the Ground Floor West offices and reception area

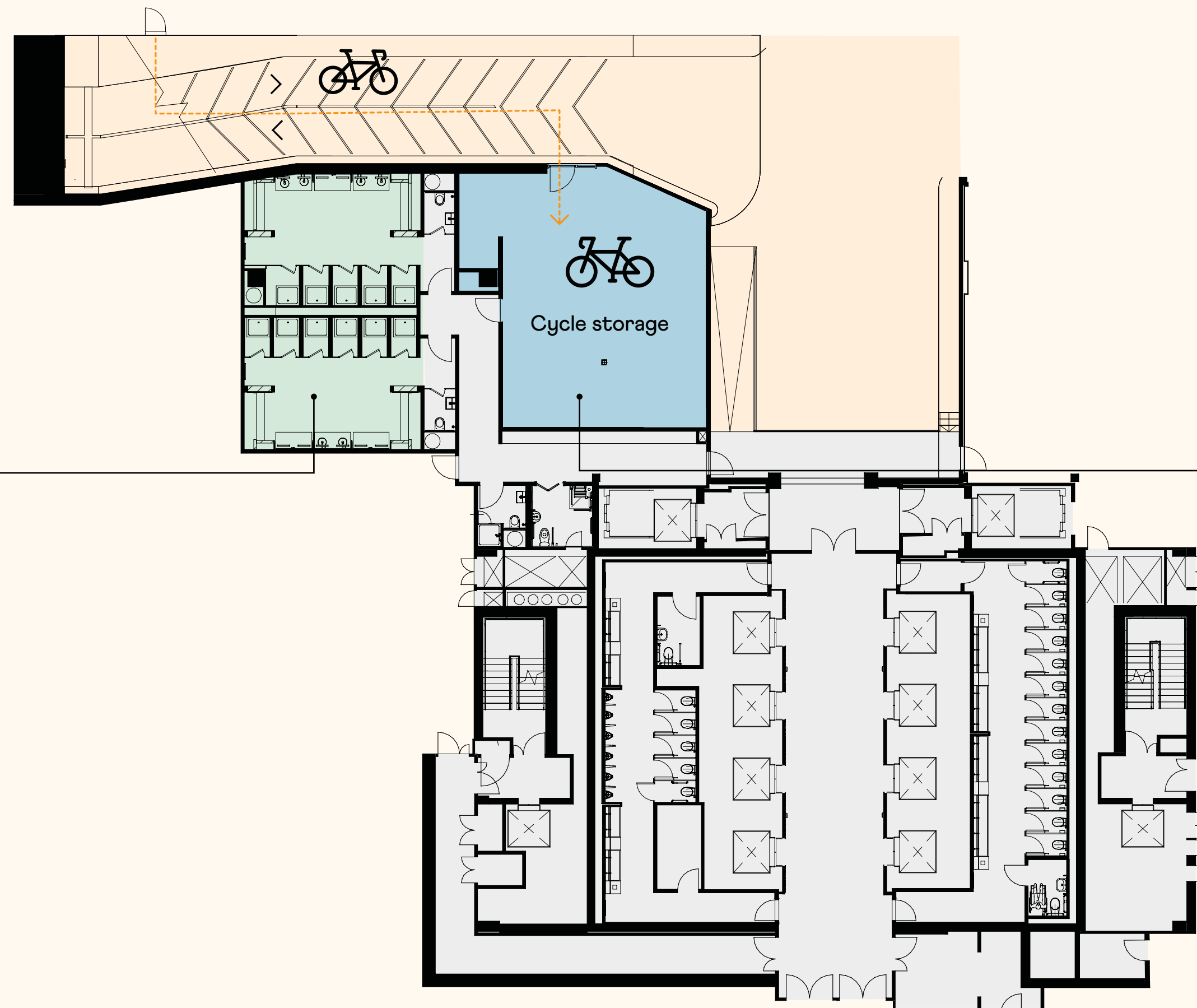
Not to scale. Indicative only.

End-of-trip



11

new showers



110

Cycle space



Key

- Cycle storage
- Cycle access
- Showers
- Core



Make it your space

Each floor plate is ready for you to put your stamp on it. Light filled, flexible and efficient office space to make your own. Configure desk space according to your needs and enjoy relaxed and informal breakout areas for productivity and sociability.



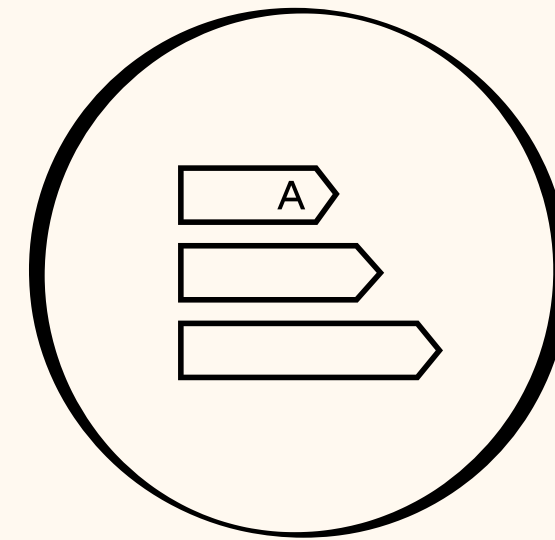
Take a closer look



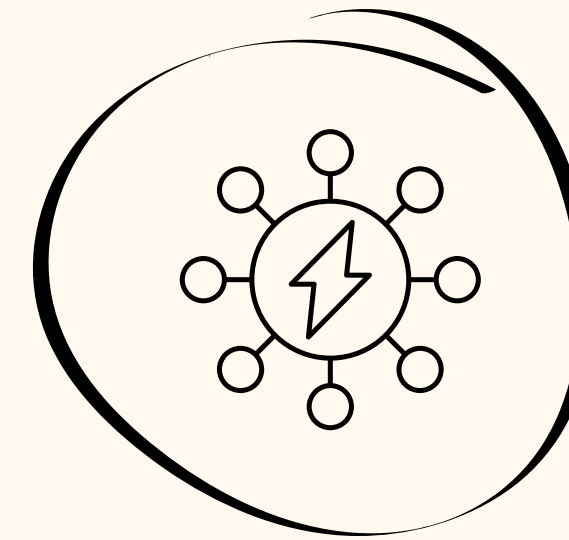
Targeting BREEAM 'Outstanding'



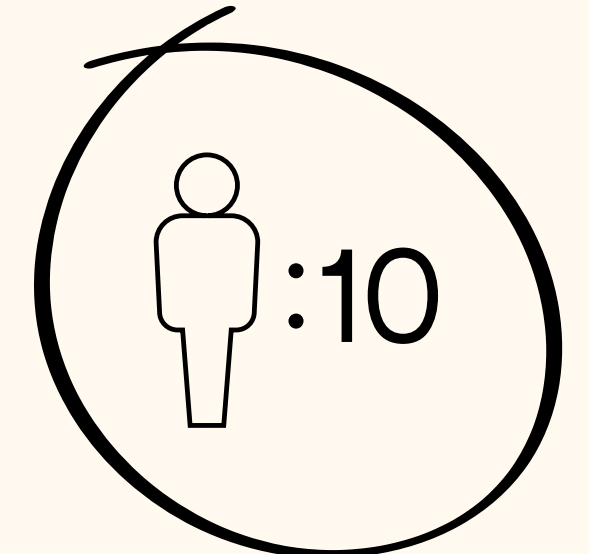
Targeting WELL Platinum



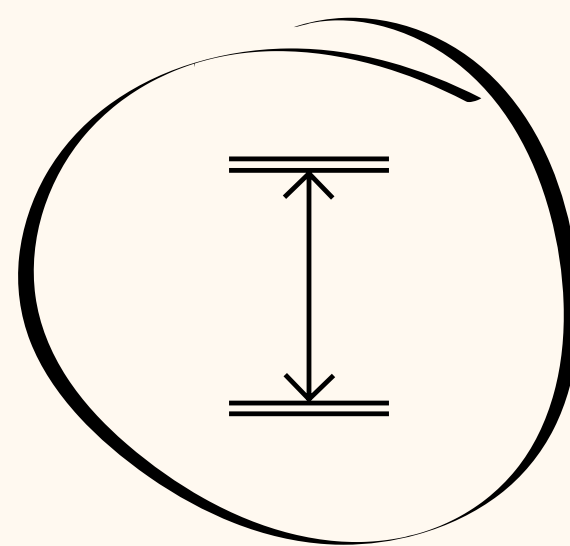
Targeting EPC A for available space



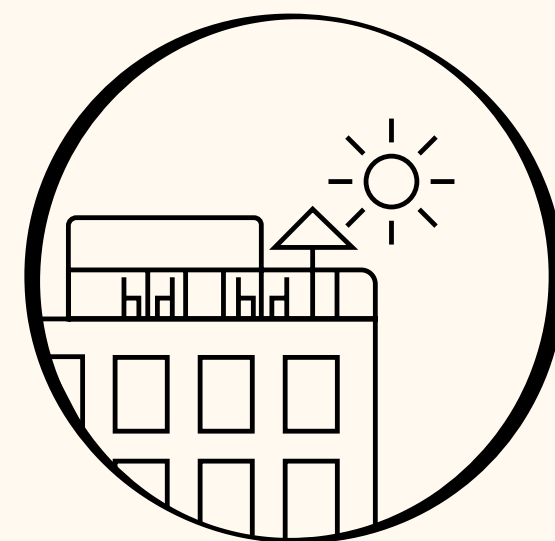
Diverse power supplies from UKPN to Landlord LV switchboards



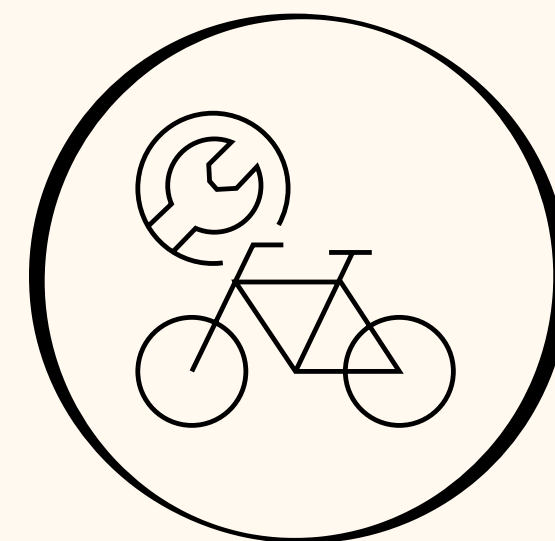
Occupancy standard 1 person per 10 sq m



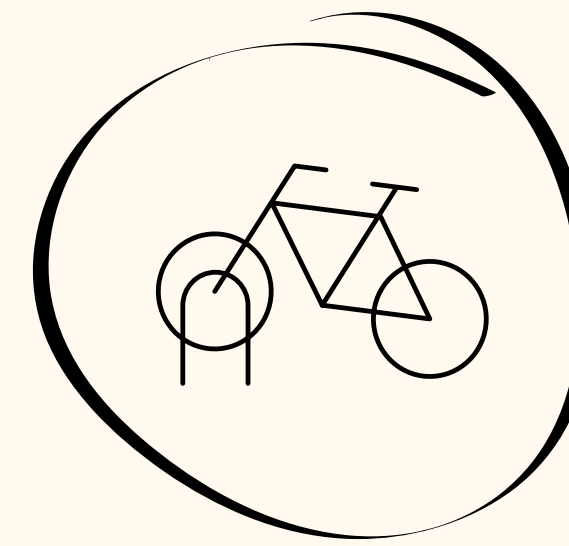
Typical office floor-to-ceiling height 2.8m



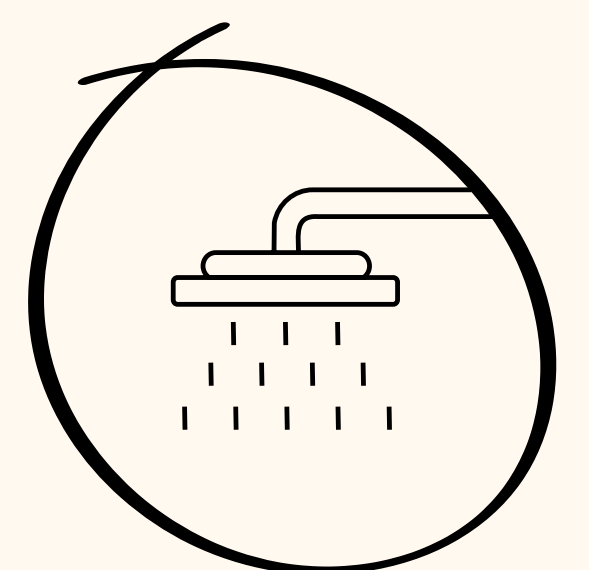
New roof garden studio with kitchenette and WCs



Cycle repair station and jet wash zone



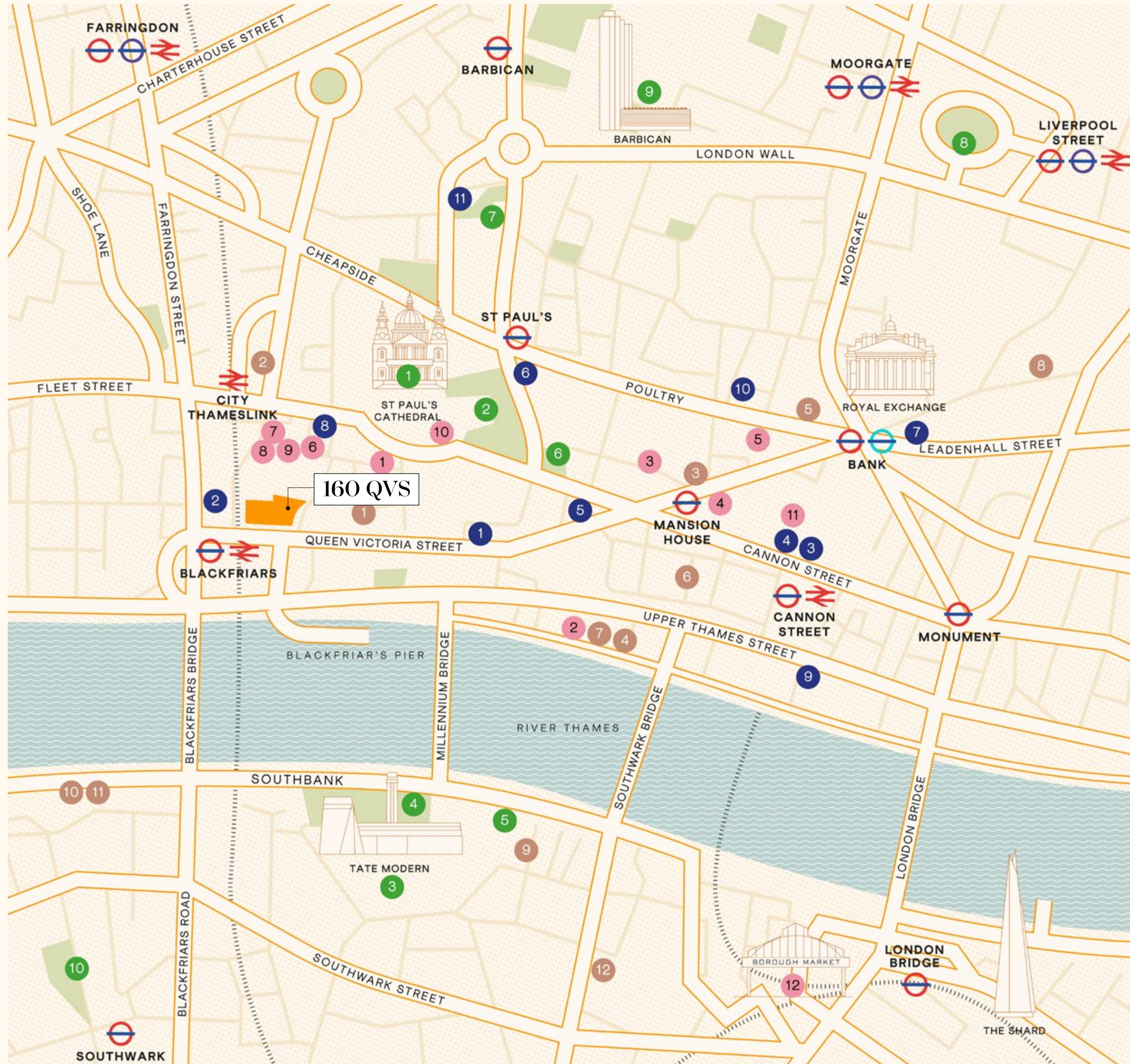
New secure cycle storage 110 spaces



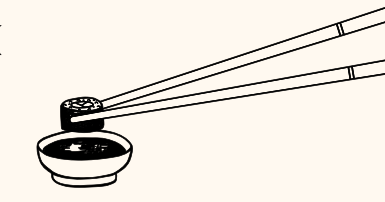
11 new shower and changing facilities

Location

The word "Location" is rendered in a large, black, serif font. Each letter is integrated with a black and white line-art illustration. The 'L' features a ballerina in a tutu. The first 'O' has two gift boxes on top. The 'C' has a gift box on top and a shopping bag hanging from its bottom. The 'a' is plain. The 't' is plain. The 'i' has a solid black dot above it. The 'o' is replaced by a donut. The final 'n' has a juggler balancing a ball on his hand.



EAT & DRINK



- 1 Sabine Rooftop Bar
- 2 Samuel Pepys
- 3 One New Change
 - Bread Street Kitchen & Bar
 - Gordon Ramsay Street Pizza
 - Madison Rooftop Bar & Restaurant
 - The Ivy Asia
- 4 Burger and Lobster
- 5 Coq d'Argent
- 6 Carter Lane coffee House
- 7 On The Bab St Paul's
- 8 Alchemy Café - The City
- 9 Patch St Paul's
- 10 Paternoster Square
 - The Happenstance
 - Dion Bar & Restaurant
 - Koha
 - Artigiano
 - Paternoster Chop House
- 11 Bloomberg Arcade/Place
 - Homeslice
 - Brigadiers
 - Caravan
 - Sugar Loaf London
 - Koya
 - Ekte Nordic Kitchen
 - Lina Stores City Restaurant
 - Vinoteca
 - The Candlemaker
 - Bleecker Bloomberg
- 12 Borough Market

FITNESS & LEISURE



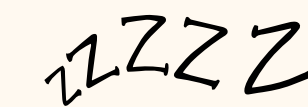
- 1 Fitness First
- 2 Boxing Trainer London
- 3 Virgin Active
- 4 9 Round
- 5 Strength House
- 6 WIT Training
- 7 Gymbox
- 8 Rena Health & Leisure at Leonardo Royal
- 9 Nuffield Health
- 10 City Athletic Bank
- 11 PureGym - St Paul's

GREEN SPACES & CULTURE



- 1 St Pauls
- 2 St Paul's Festival Gardens
- 3 Tate Modern
- 4 Tate Modern Garden
- 5 The Globe
- 6 Cleary Garden
- 7 Postman's Park
- 8 Finsbury Circus Gardens
- 9 Barbican Water Gardens
- 10 Hatfields Green

HOTELS



- 1 Leonardo Royal
- 2 Club Quarters
- 3 Cove Cannon Street
- 4 The Westin London City
- 5 The Ned
- 6 Vintry and Mercer
- 7 Locke at Broken Wharf
- 8 Threadneedles, Autograph Collection
- 9 Native Bankside
- 10 Sea Containers
- 11 Bankside Hotel
- 12 Novotel London Bridge



Meet the neighbours

At 160 QVS, you're in good company.





3 minute walk to Blackfriars Station

10 minute walk to Farringdon Station

14 minute walk to Bank Station

DESTINATIONS FROM BLACKFRIARS STATION

JOURNEY TIME (MINS)

Bank	9
London Bridge	6
Victoria	10
Liverpool Street	12
Farringdon	13
Stratford	23
Canary Wharf	26

DESTINATIONS FROM BANK STATION

JOURNEY TIME (MINS)

King's Cross St Pancras	9
Bond Street	12
Stratford	11
Canary Wharf	13
Paddington	21
London City Airport	21
Heathrow Airport	43

New entrance facing onto Cannon Street now open.
Source: Citymapper.

Where past, present, and future meet



This historic district continues to grow and develop in a way that brings dynamism and fresh energy to the area. Enjoy the buzz around One New Change or wander the lanes and alleys for more boutique retailers. From the heights of the Madison rooftop terrace to Café Below in the crypt of St Mary's Bow, there are so many layers to be discovered.



Located within walking distance of the river, it couldn't be easier to cross to the South Bank and take in theatre at The Globe or an exhibition at Tate Modern. Enjoy the scenic route? Walk along the Thames in either direction to reach the City or Soho; you could even jump on the Clipper for a first-class way to fall in love with London all over again.



160QVS.com



MIKE VOLLER
mike.voller@knighfrank.com
+44 (0)7739 763 699

ABBY BROWN
abby.brown@knighfrank.com
+44 (0)7827 083 969



ANGUS TULLBERG
angus.tullberg@savills.com
+44 (0)7976 256 487

ARTIE TAYLOR
artie.taylor@savills.com
+44 (0)7866 203 403

PHILIP PEARCE
ppearce@savills.com
+44 (0)7870 555 727

CATHERINE FACER
catherine.facer@savills.com
+44 (0)7977 172 821

The Agents for themselves and for the vendors or lessors of the property whose agents they are give notice that, (i) these particulars are given without responsibility of The Agents or the Vendors or Lessors as a general outline only, for the guidance of prospective purchasers or tenants, and do not constitute the whole or any part of an offer or contract; (ii) The Agents cannot guarantee the accuracy of any description, dimension, references to condition, necessary permissions for use and occupation and other details contained herein and any prospective purchasers or tenants should not rely on them as statements or representations of fact but must satisfy themselves by inspection or otherwise as to the accuracy of each of them; (iii) no employee of The Agents have any authority to make or give any representation or enter into any contract whatsoever in relation to the property; (iv) VAT may be payable on the purchase price and / or rent, all figures are exclusive of VAT, intending purchasers or lessees must satisfy themselves as to the applicable VAT position, if necessary by taking appropriate professional advice; (v) The Joint Agents will not be liable, in negligence or otherwise, for any loss arising from the use of these particulars. April 2026.